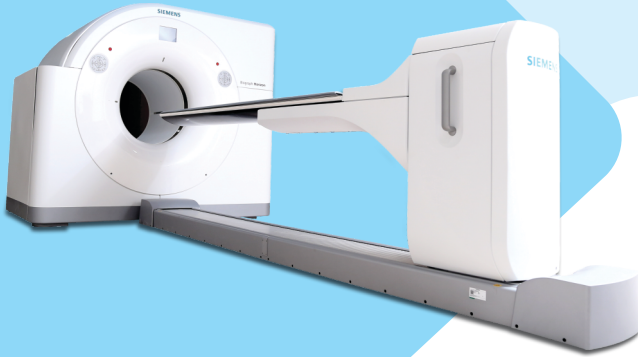
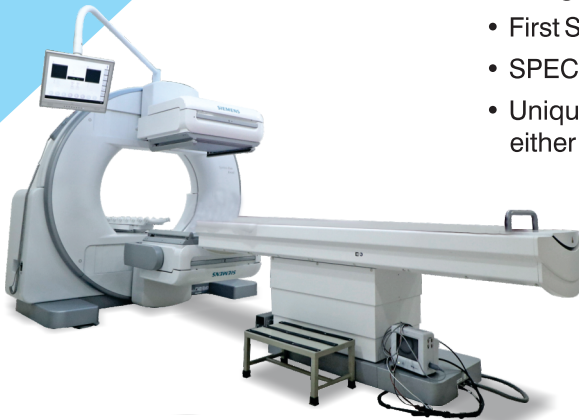


PET CT



- First biograph horizon with TRUE V in Western India
- TRUE V reduces scanning time, thereby adding patient comfort
- Capability to scan with good Image Quality even @ 5 mCi dose (due to the LSO based crystals coupled with TOF Technology)

SPECT (Gamma Camera)



- “Diagnostics & Therapeutics”
- First SYMBIA EVO EXCEL of Gujarat
- SPECT with HD Detector
- Unique Reconstruction Engine to reduce either TIME or DOSE by 50%.

ZYDUS CANCER CENTRE

Zydus Hospitals Road, S.G. Highway,
Thaltej, Ahmedabad - 380 054, Gujarat.

Please Contact: **+91 72290 47022**





Dr Sunny Gandhi

M.B.B.S, D.R.M, DNB (Nuclear Medicine)
FEBNM (Europe), FANMB (Asia),
Consultant Nuclear Medicine,
Zydus Hospital, Ahmedabad.
M: +91-7698482148
Email: - gndsunny@gmail.com

- Worked as a Consultant and Head, Department of Nuclear Medicine & PET-CT, Infocus Diagnostics, Ahmedabad, Gujarat for 5.5 years.
- Handled Nuclear Medicine Department (Dual Head Gamma Camera & PET-CT) in full fledged radiology diagnostic set up.
- ~ 9000 PET-CT scans reported
- Fellow of European Board of Nuclear Medicine
- Fellow of Asian Nuclear Medicine Board
- Life time member of Society of Nuclear Medicine (SNM), India and Association of Nuclear Medicine physician of India (ANMPI)
- Total 10 publications in national and international journals
- Total 10 poster/oral presentations in national and international journals
- Reviewed 1 paper as guest reviewer
- Attended various national and international conferences
- Few guest lectures and panel discussions in various local CMEs

ZYDUS CANCER CENTRE

Zydus Hospitals Road, S.G. Highway,
Thaltej, Ahmedabad - 380 054, Gujarat.

Please Contact: **+91 72290 47022**

